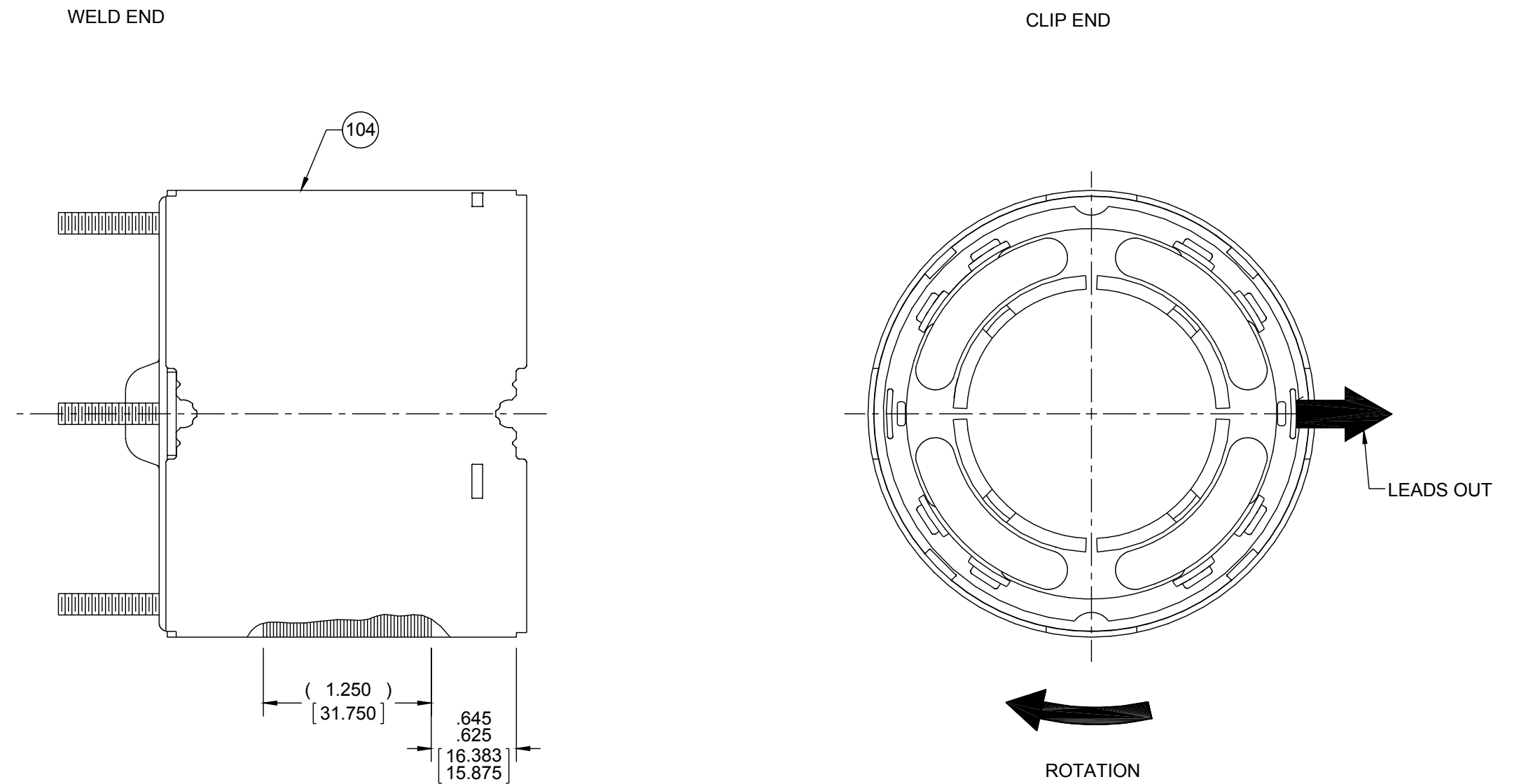




ORACLE PART REV. 014

NOTES:

1. STAKE STATOR TO SLEEVE PER P.S. 88830264
2. MAXIMUM TORQUE REQUIRED TO TURN MOTOR SHAFT IS 3/8 INCH-OUNCE.
3. MAKE-UP WASHERS ARE TO BE ADDED OR DELETED TO ACHIEVE REQUIRED ENDPLAY PER PROCESS STANDARD.
4. SEE ROTOR AND SHAFT DRAWING FOR WASHER SET-UP.



MEXICO PACKING SPECIFICATIONS

1. PACK 1 PER CARTON, 45 PER LAYER, 270 PER PALLET, 6 LAYERS PER PALLET, PER 88834200.
2. PLACE FOAM RING ON CLIP END OF MOTOR. PLACE FILLER TUBE OVER SHAFT EXTENSION AND PLACE IN CARTON.
3. PLACE CARTON LABEL ON SHAFT END OF CARTON. CARTON LABELS MUST ALL FACE ONE DIRECTION TOWARD THE OPEN END OF THE PALLET. SEE P.S. 88834408.
4. PLACE (1) FLAT PAD ON PALLET, (1) BETWEEN EACH LAYER AND (1) ON TOP. PLACE ALL INSPECTION STICKERS AND WRITING ON TOP FLAT PAD.
5. NO PACKAGING TAPE OVER CARTON LABEL.

DRAWING REVISION R		REVISION BY PLA	DATE 7/2/2015	TOLERANCES UNLESS OTHERWISE SPECIFIED:		DRAWN BY PLA		REGAL™ Regal Beloit America, Inc.	
ECO-0080873		APPROVED BY KSA	DATE 7/2/2015	DEC.	INCH	mm	ANGLE	DATE 6/1/2015	DESCRIPTION <b>MOTOR ASSY</b>
CORRECTED ROT. ARROW/DID NOT ADD RIGHT IN OTIS		CORRECTED ROT. ARROW/DID NOT ADD RIGHT IN OTIS		.X	±0.1	[±2.5]	±0.5°	APPROVED BY KSA	
<small>COPYRIGHT REGAL BELOIT AMERICA, INC. ALL RIGHTS RESERVED.                  PROPRIETARY AND CONFIDENTIAL INFORMATION - THIS DOCUMENT IS THE PROPERTY OF REGAL BELOIT AMERICA, INC. ("OWNER") AND CONTAINS OWNER'S PROPRIETARY INFORMATION. ANY PERSON, CORPORATION OR OTHER FIRM RECEIVING IT IS DEEMED, BY RECEIVING IT, TO AGREE THAT IT, AND/OR ANY PART OF IT, SHALL NOT BE DISCLOSED TO ANY PERSON, CORPORATION OR OTHER ENTITY, DUPLICATED, AND/OR USED, EXCEPT AS EXPRESSLY APPROVED IN WRITING IN ADVANCE BY OWNER. THIS DOCUMENT SHALL BE RETURNED TO OWNER UPON REQUEST. IT MAY BE SUBJECT TO CERTAIN RESTRICTIONS UNDER APPLICABLE EXPORT CONTROL LAWS AND REGULATIONS.</small>				REMOVE BURRS & BREAK SHARP EDGES: .003/.015 [.076/.381] X 45°		MACHINED SURFACES: 125/3.2		DATE 6/1/2015	MATERIAL
THIRD ANGLE PROJECTION		SIZE C		DRAWING NUMBER 71638065		PROCESS/FINISH BLACK		SHEET 2 OF 2	